



## Collection 22-23

Carpet Tiles & Planks  
Product Brochure



**Donaire**<sup>TM</sup>  
Carpet Rolls & Carpet Tiles

[www.donairecarpet.com](http://www.donairecarpet.com)

Carpet Tiles  
&  
Carpet Planks

Donaire™  
Carpet Rolls & Carpet Tiles

[www.donairecarpet.com](http://www.donairecarpet.com)

Nylon Carpet Tiles



**Stockyards**

Hosur  
Bangalore  
Bhiwandi  
Delhi  
Kolkata  
Siliguri





**Artdesign**

**Parallelo**

**Space**

**Uptown**

**Viti**

**Colour Zone**

**ILLUSION**

**Streetwise**

**Storm**

**Skien**

**Zara**

**Textile**

**Noah**

**Dallas**

**Euphoria**

**Titanic**

**Urbanart**

**Arte**

**Milan**

**Signature**

**Benchmark**

**Donaire**<sup>TM</sup>  
Carpet Rolls & Carpet Tiles

**CARPET TILES  
&  
PLANKS**



[www.donairecarpet.com](http://www.donairecarpet.com)

**COLLECTION 22-23**

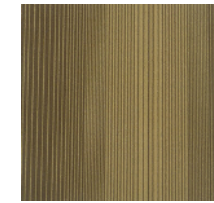


# ARTDESIGN

POLYPROPYLENE CARPET TILES

## SPECIFICATION

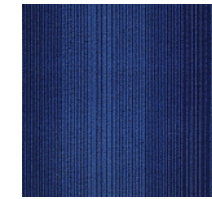
<b>Style</b>	<b>ARTDESIGN</b>
<b>Yarn</b>	<b>100% Advanced PP</b>
<b>Type</b>	<b>Level Loop</b>
<b>Pile Weight</b>	<b>580 gm/sqm</b>
<b>Backing</b>	<b>E Back</b>
<b>Size</b>	<b>50 cm X 50 cm</b>
<b>Quantity</b>	<b>5 sqm/Box</b>



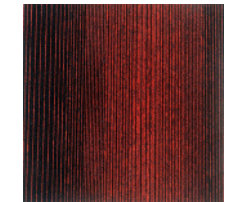
**AD 01 | Beige**



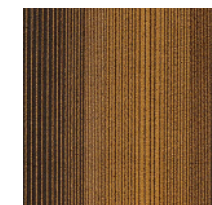
**AD-02 | Grey**



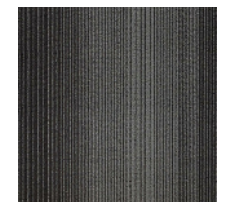
**AD-03 | Blue**



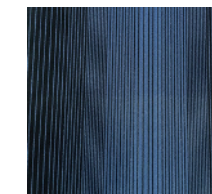
**AD 102 | Jupiter**



**AD 103 | Texas**



**AD 05 | Black**



**AD 101 | Moonlight**

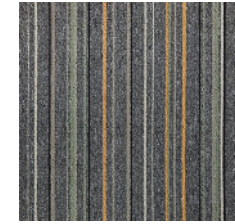




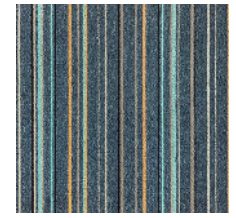
**parallelo**  
Commercial Carpet Tiles

## SPECIFICATION

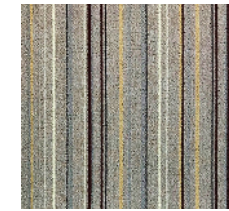
<b>Style</b>	<b>PARALLELO</b>
<b>Yarn</b>	<b>100% Advanced PP</b>
<b>Type</b>	<b>Level Loop</b>
<b>Pile Weight</b>	<b>580 gm/sqm</b>
<b>Backing</b>	<b>E Back</b>
<b>Size</b>	<b>50 cm X 50 cm</b>
<b>Quantity</b>	<b>5 sqm/Box</b>



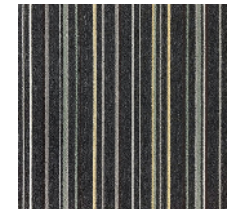
**PL 02 | Cloud**



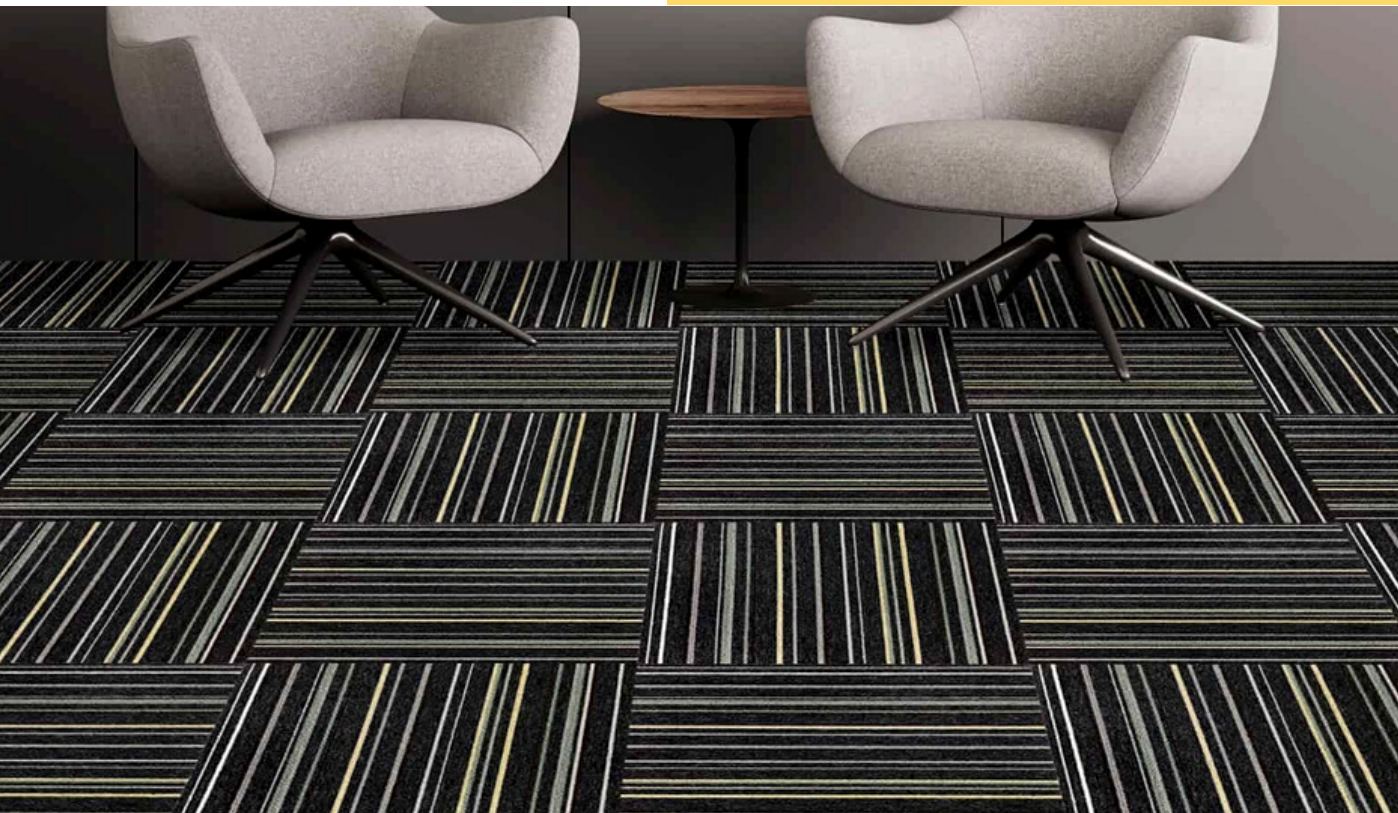
**PL 03 | Ocean**



**PL 06 | Desert**



**PL 07 | Twilight**



" Only parallel lines can  
walk together  
till infinity "

**Donaire**<sup>TM</sup>  
Carpet Rolls & Carpet Tiles

[www.donairecarpet.com](http://www.donairecarpet.com)

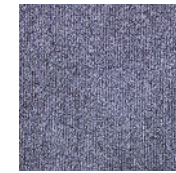


# SPACE

Contract Plain Carpet Tile

## SPECIFICATION

<b>Style</b>	<b>SPACE</b>
<b>Gauge</b>	<b>1/10</b>
<b>Yarn</b>	<b>100% Advance PP</b>
<b>Pile Weight</b>	<b>540 gm/sqm</b>
<b>Backing</b>	<b>Eco Back</b>
<b>Type</b>	<b>Level Loop</b>
<b>Size</b>	<b>50cm X 50cm</b>



5571 | Light



5570 | Dark



5580 | Black



5520  
Deep Sea



5524  
Mid Sea



5521 Electric  
Blue



5512  
Maroon



5511  
Red



5540  
Orange



5564  
Mochatan



5563  
Caramel



5551  
Grain



5530  
Green



5550  
Yellow



# UPTOWN

PVC BACKED CARPET TILE

## SPECIFICATION

<b>Style</b>	<b>UPTOWN</b>
<b>Yarn</b>	<b>100% PP</b>
<b>Gauge</b>	<b>1/12 Hi-Low Loop</b>
<b>Pile Weight</b>	<b>600 gm/sqm</b>
<b>Backing</b>	<b>PVC</b>
<b>Size</b>	<b>50 cm X 50 cm</b>
<b>Quantity</b>	<b>5 sqm/Box</b>



**UT 01**



**UT 02**



**UT 03**



**UT 04**



" In order to be  
irreplaceable, one must  
always be different "

**Donaire**<sup>TM</sup>  
Carpet Rolls & Carpet Tiles

[www.donairecarpet.com](http://www.donairecarpet.com)



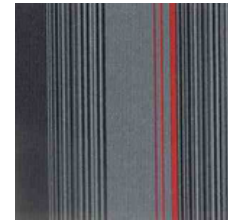
VITI

## SPECIFICATION

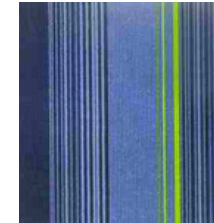
<b>Style</b>	VITI
<b>Yarn</b>	PP
<b>Construction</b>	Level Loop
<b>Pile Weight</b>	575 gm/sqm
<b>Backing</b>	PVC + Fibre Glass
<b>Size</b>	50 cm X 50 cm
<b>Quantity</b>	6 sqm/Box



VT 01 | Orange



VT 02 | Red



VT 03 | Green



VT 04 | Blue



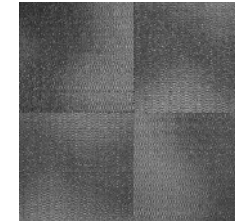
" Colour reinforces a pleasant quality to design "





## SPECIFICATION

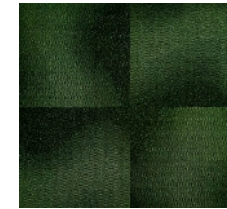
<b>Style</b>	<b>COULOURZONE</b>
<b>Yarn</b>	<b>PP</b>
<b>Construction</b>	<b>1/12 High-low Loop</b>
<b>Pile Weight</b>	<b>600 gm/sqm</b>
<b>Backing</b>	<b>PVC + Fibre Glass</b>
<b>Size</b>	<b>50 cm X 50 cm</b>
<b>Quantity</b>	<b>5 sqm/Box</b>



**CZ 01**



**CZ 02**



**CZ 03**



**CZ 04**

**4 tiles images**



*" Colours are the smiles of nature"*





## SPECIFICATION

<b>Style</b>	<b>ILLUSION</b>
<b>Yarn</b>	<b>100% PP</b>
<b>Gauge</b>	<b>1/12 High-Low Loop</b>
<b>Pile Weight</b>	<b>600 gm/sqm</b>
<b>Backing</b>	<b>PVC</b>
<b>Size</b>	<b>50 cm X 50 cm</b>
<b>Quantity</b>	<b>5 sqm/Box</b>



**IL 01 | Ruby**



**IL 02 | Topaz**



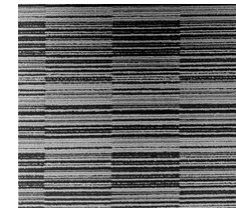
**IL 03 | Jade**



**IL 04 | Current**



**IL 05 | Flame**



**IL 06 | Moonstone**





# streetwise

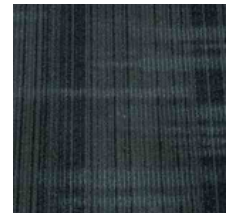
CARPET TILES

## SPECIFICATION

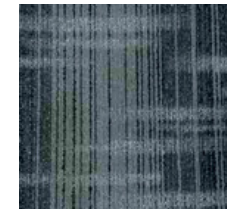
<b>Style</b>	<b>STREETWISE</b>
<b>Yarn</b>	<b>100% PP</b>
<b>Gauge</b>	<b>1/12 High-Low Loop</b>
<b>Pile Weight</b>	<b>600 gm/sqm</b>
<b>Backing</b>	<b>PVC</b>
<b>Size</b>	<b>50 cm X 50 cm</b>
<b>Quantity</b>	<b>5 sqm/Box</b>



SW 01



SW 02



SW 03



SW 04



" Simplicity , carried to an extreme , becomes elegance "



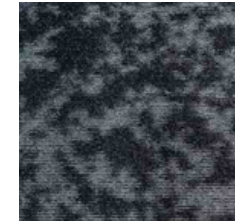


# STORM

---

## SPECIFICATION

<b>Style</b>	<b>STORM</b>
<b>Yarn</b>	<b>100% PP</b>
<b>Gauge</b>	<b>1/12 High-Low Loop</b>
<b>Pile Weight</b>	<b>600 gm/sqm</b>
<b>Backing</b>	<b>PVC</b>
<b>Size</b>	<b>50 cm X 50 cm</b>
<b>Quantity</b>	<b>5 sqm/Box</b>



ST 01



ST 02



ST 03



ST 04



---

" Design can be an art,  
aesthetics and simple &  
thats why its is so  
complicated "



# SKIEN

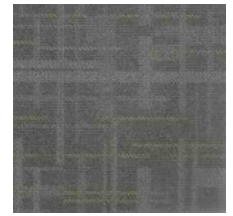
---

## SPECIFICATION

<b>Style</b>	<b>SKIEN</b>
<b>Yarn</b>	<b>100% PP</b>
<b>Gauge</b>	<b>1/12 High-Low Loop</b>
<b>Pile Weight</b>	<b>600 gm/sqm</b>
<b>Backing</b>	<b>PVC</b>
<b>Size</b>	<b>50 cm X 50 cm</b>
<b>Quantity</b>	<b>5 sqm/Box</b>



**SK 01**



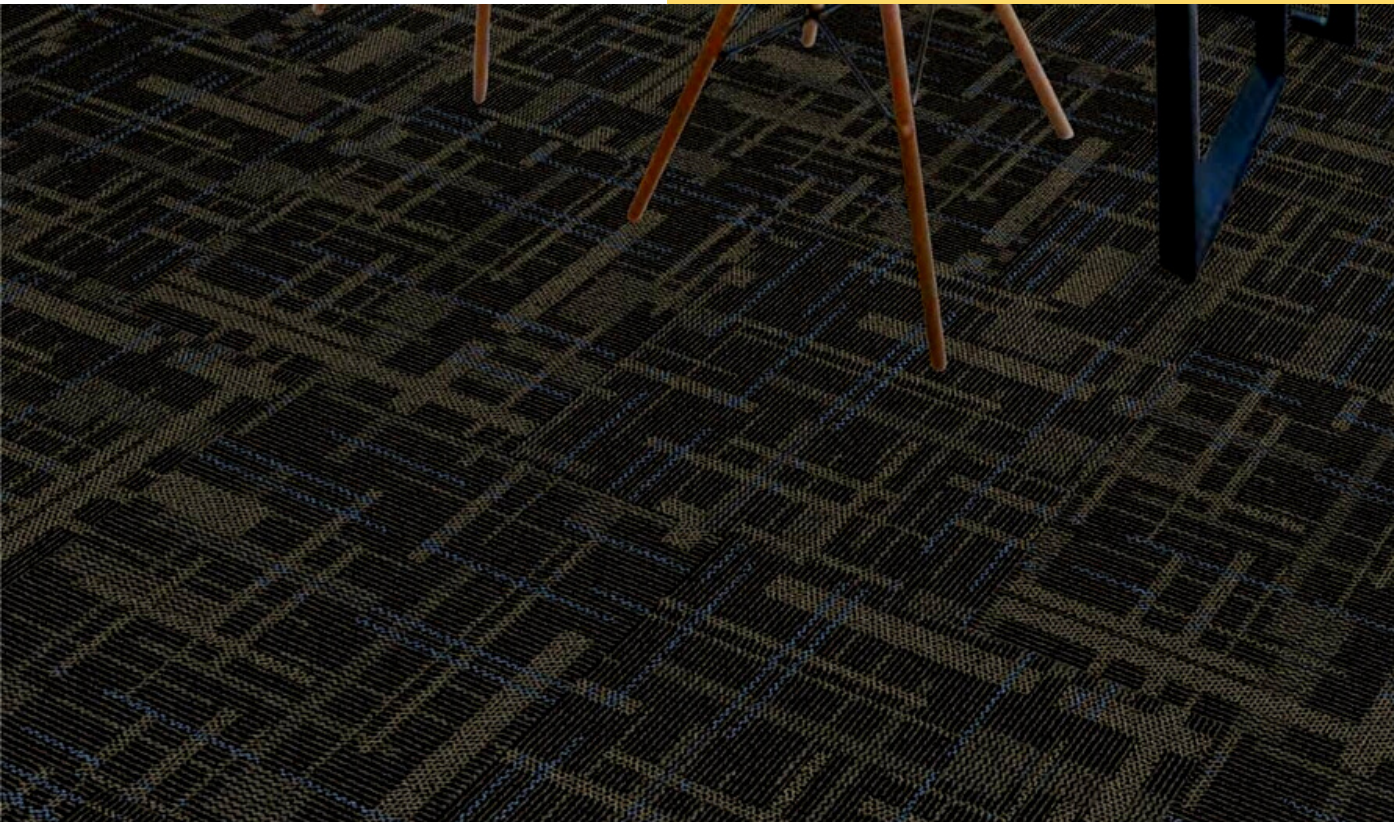
**SK 02**



**SK 03**



**SK 04**



---

"Art is a pattern informed  
by sensibility"



## SPECIFICATION

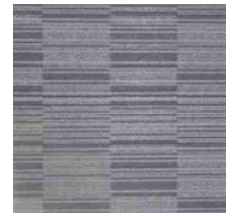
<b>Style</b>	<b>ZARA</b>
<b>Yarn</b>	<b>PP</b>
<b>Construction</b>	<b>High-Low Graphic</b>
<b>Pile Weight</b>	<b>600 gm/sqm</b>
<b>Backing</b>	<b>PVC + Fibre Glass</b>
<b>Size</b>	<b>50 cm X 50 cm</b>
<b>Quantity</b>	<b>5 sqm/Box</b>

# ZARA

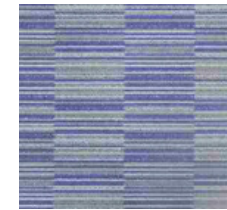
---



**ZA 01**



**ZA 02**



**ZA 03**



**ZA 04**



---

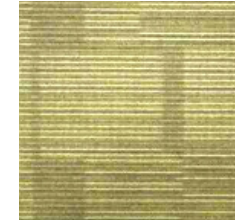
" The best design is the simplest one that works ""



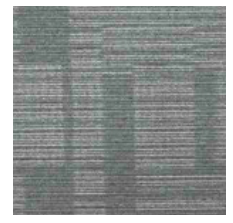


## SPECIFICATION

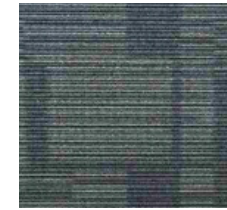
<b>Style</b>	<b>TEXTILE</b>
<b>Yarn</b>	<b>100% PP</b>
<b>Gauge</b>	<b>1/12</b>
<b>Pile Weight</b>	<b>580 gm/sqm</b>
<b>Backing</b>	<b>PVC + Fibre Glass</b>
<b>Size</b>	<b>50 cm X 50 cm</b>
<b>Quantity</b>	<b>5 sqm/Box</b>



**TX 01**



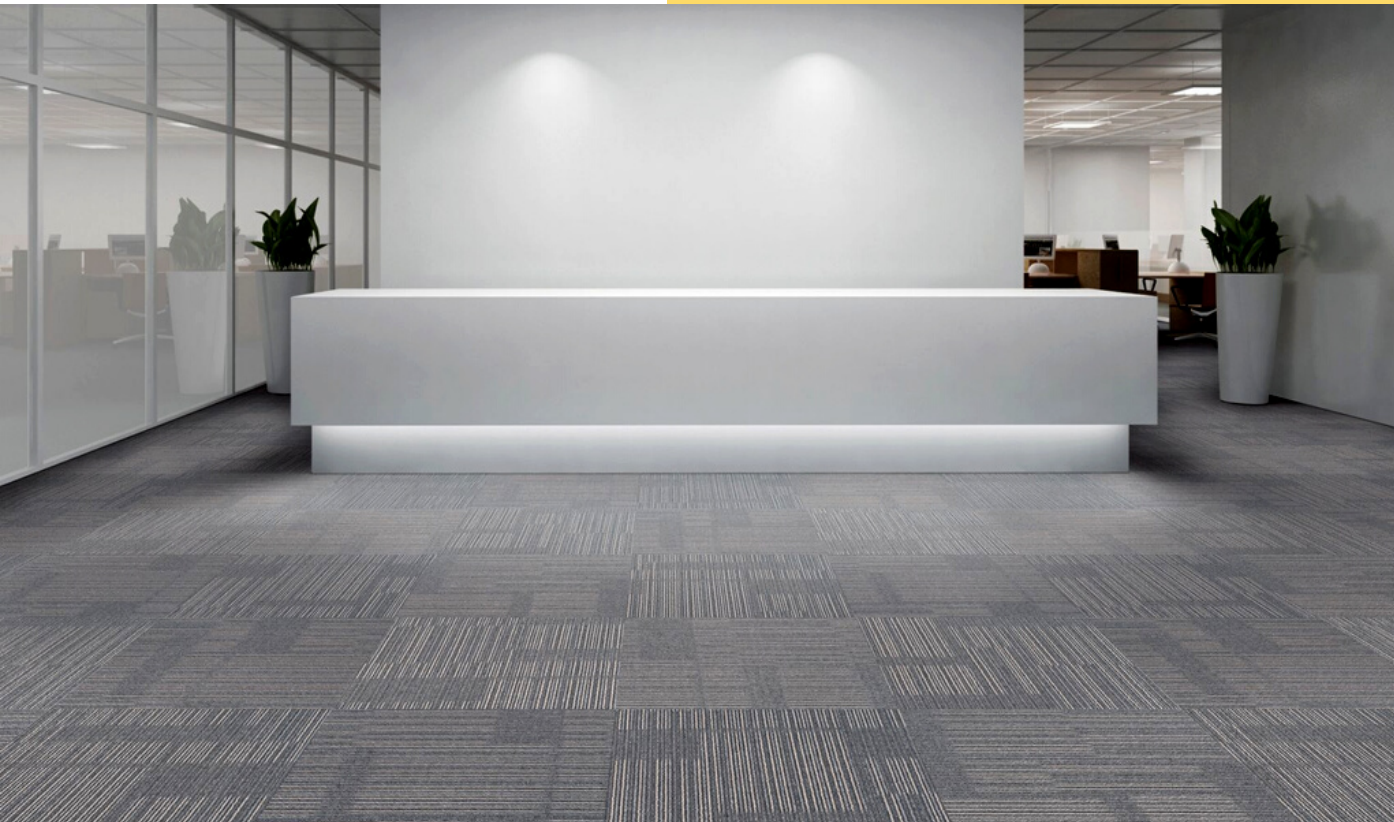
**TX 02**



**TX 03**



**TX 04**



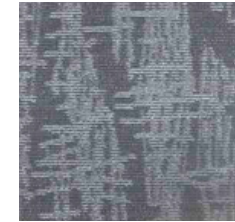
" Luxury is in each detail "





## SPECIFICATION

<b>Style</b>	<b>NOAH</b>
<b>Yarn</b>	<b>PP</b>
<b>Construction</b>	<b>High-Low Loop pile</b>
<b>Pile Weight</b>	<b>600 gm/sqm</b>
<b>Backing</b>	<b>PVC + Fibre Glass</b>
<b>Size</b>	<b>50 cm X 50 cm</b>
<b>Quantity</b>	<b>5 sqm/Box</b>



**NH 01**



**NH 02**



**NH 03**



**NH 04**



---

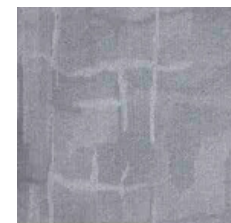
*" Great design is great complexity presented via simplicity "*



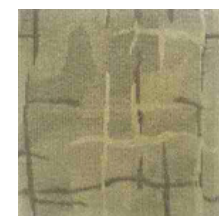
**DALLAS** | CONTRACT  
POLYPROPYLENE CARPET TILES | CARPET  
TILES

## SPECIFICATION

<b>Style</b>	<b>DALLAS</b>
<b>Yarn</b>	<b>PP</b>
<b>Gauge</b>	<b>1/12</b>
<b>Pile Weight</b>	<b>575 gm/sqm</b>
<b>Backing</b>	<b>PVC + Fibre Glass</b>
<b>Size</b>	<b>50 cm X 50 cm</b>
<b>Quantity</b>	<b>5 sqm/Box</b>



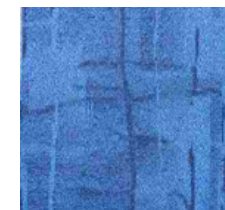
**DL 01**



**DL 03**



**DL 12**



**DL 13**



**Donaire**<sup>TM</sup>  
Carpet Rolls & Carpet Tiles

[www.donairecarpet.com](http://www.donairecarpet.com)

"Design is an expression  
of the purpose "



euphoria  
carpet planks

## SPECIFICATION

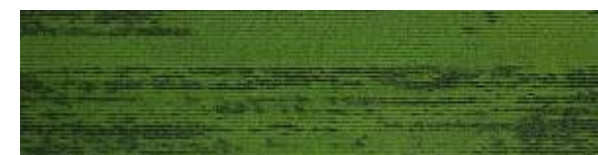
<b>Style</b>	<b>NOAH</b>
<b>Yarn/Type</b>	<b>PP / Plank</b>
<b>Gauge</b>	<b>1/12 High-Low Loop</b>
<b>Pile Weight</b>	<b>600 gm/sqm</b>
<b>Backing</b>	<b>PVC + Fibre Glass</b>
<b>Size</b>	<b>25 cm X 100 cm</b>
<b>Quantity</b>	<b>5 sqm/Box</b>



**UR 01**



**UR 02**



**UR 03**



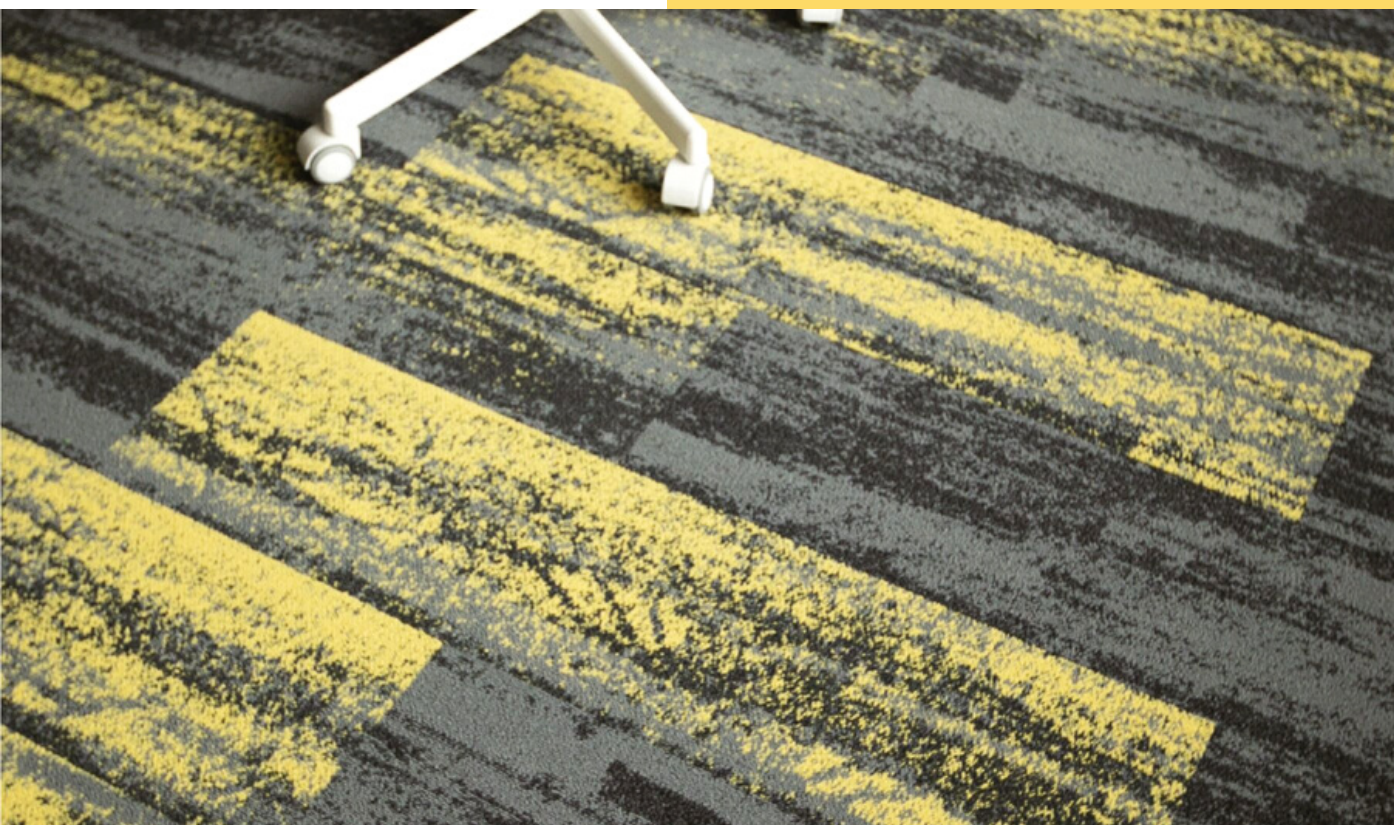
**UR 04**



**UR 05**



**UR 06**



**Donaire**<sup>TM</sup>  
Carpet Rolls & Carpet Tiles

[www.donairecarpet.com](http://www.donairecarpet.com)

" Colour is a power which directly influences the soul "



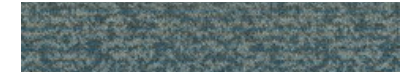


## SPECIFICATION

<b>Style</b>	<b>URBANART</b>
<b>Yarn</b>	<b>100% PP</b>
<b>Gaugel Type</b>	<b>1/12 , PLANK</b>
<b>Pile Weight</b>	<b>680 gm/sqm</b>
<b>Backing</b>	<b>PVC plus Fibre Glass</b>
<b>Size</b>	<b>25 cm X 100 cm</b>
<b>Quantity</b>	<b>6 sqm / Box</b>



**UA 7B**



**UA 7A**



**UA 6B**



**UA 6A**



**UA 5B**



**UA 5A**



**UA 3B**



**UA 3A**



**UA 2B**



**UA 2A**



**UA 01**



**TITANIC**  
NYLON BLENDED CARPET PLANKS

CONTRACT  
FLOORING

## SPECIFICATION

<b>Style</b>	<b>TITANIC</b>
<b>Yarn</b>	<b>90%PP + 10% Nylon</b>
<b>Gaugel Type</b>	<b>5/64 , PLANK</b>
<b>Pile Weight</b>	<b>550 gm/sqm</b>
<b>Backing</b>	<b>Cushion Backing</b>
<b>Size</b>	<b>25 cm X 100 cm</b>
<b>Quantity</b>	<b>4 sqm/Box</b>



**TT 02**



**TT 03**



**TT 05**



**TT 06**



**TT 08**



**Donaire**<sup>TM</sup>  
Carpet Rolls & Carpet Tiles

[www.donairecarpet.com](http://www.donairecarpet.com)

" Elegance is beauty  
that never fades "



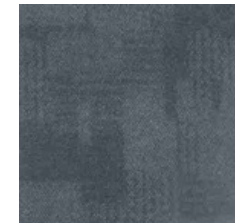
# ARTE

NYLON CARPET TILE

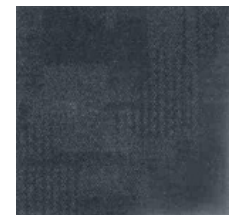
---

## SPECIFICATION

<b>Style</b>	<b>ARTE</b>
<b>Yarn</b>	<b>100% NYLON</b>
<b>Construction</b>	<b>Multilevel Modular</b>
<b>Pile Weight</b>	<b>615 gm/sqm</b>
<b>Backing</b>	<b>PVC + Fibre Glass</b>
<b>Size</b>	<b>50 cm X 50 cm</b>
<b>Quantity</b>	<b>6 sqm/Box</b>



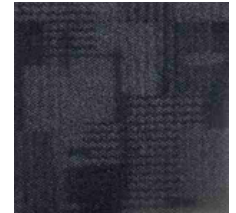
**AR 01**



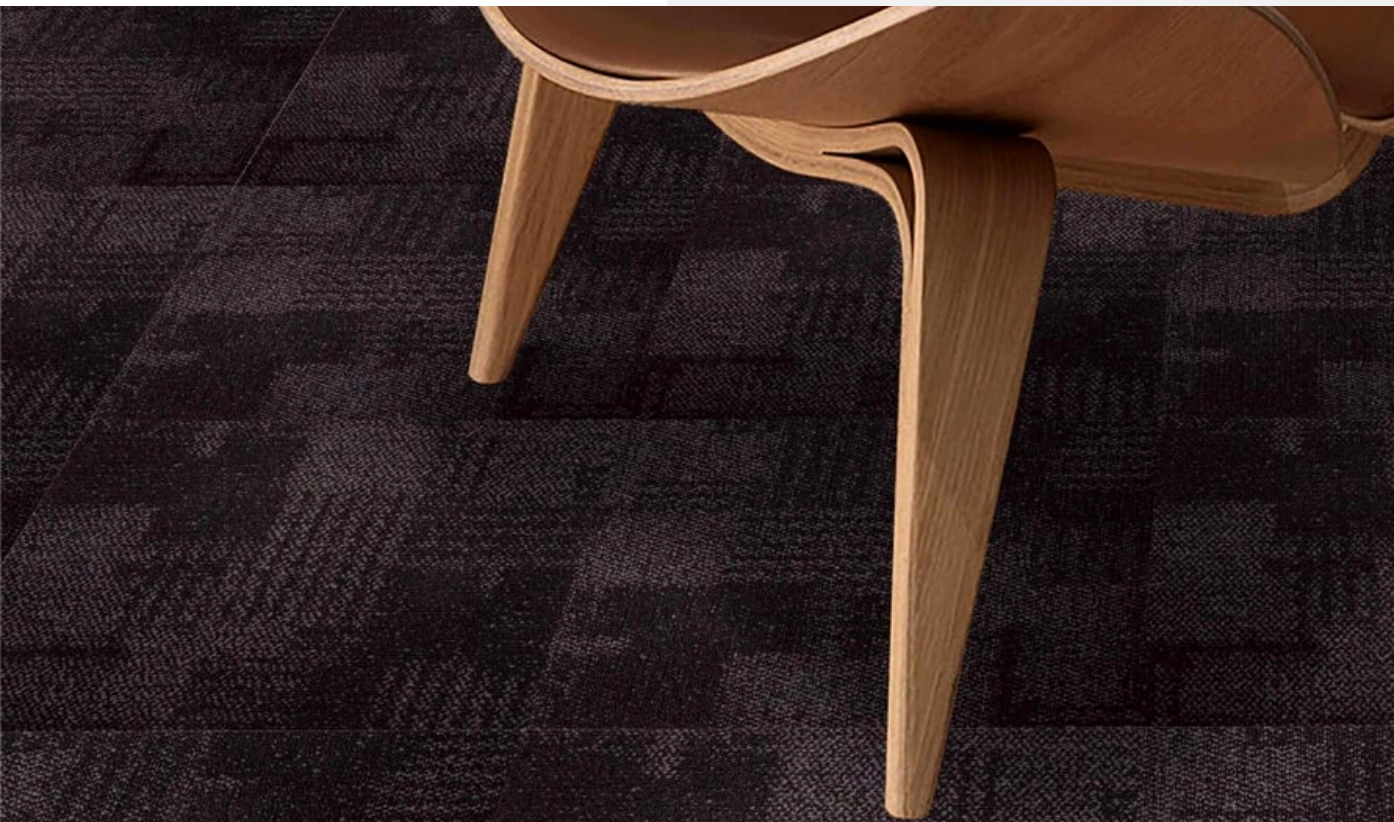
**AR 02**



**AR 03**



**AR 04**



---

*"Quality isn't expensive  
its priceless "*



# MILAN

NYLON CARPET TILES

---

## SPECIFICATION

<b>Style</b>	MILAN
<b>Yarn</b>	100% NYLON
<b>Construction</b>	Level Loop
<b>Pile Weight</b>	625 gm/sqm
<b>Backing</b>	PVC + Fibre Glass
<b>Size</b>	50 cm X 50 cm
<b>Quantity</b>	6 sqm/Box



**MN 01**



**MN 06**



**MN 05**



---

*"Quality never compromises with itself"*



# SIGNATURE

NYLON CARPET TILE

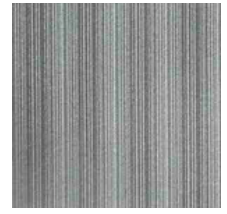
---

## SPECIFICATION

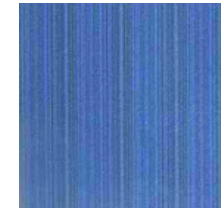
<b>Style</b>	<b>SIGNATURE</b>
<b>Yarn</b>	<b>100% NYLON 6</b>
<b>Construction</b>	<b>Level Loop</b>
<b>Pile Weight</b>	<b>550 gm/sqm</b>
<b>Backing</b>	<b>PVC + Fibre Glass</b>
<b>Size</b>	<b>50 cm X 50 cm</b>
<b>Quantity</b>	<b>6 sqm/Box</b>



**SG 05**



**SG 09**



**SG 06**



---

" Autograph your life  
with a signature of  
excellence "



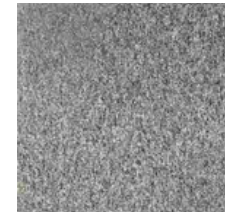
# BENCHMARK

NYLON CARPET TILE

---

## SPECIFICATION

<b>Style</b>	<b>SIGNATURE</b>
<b>Yarn</b>	<b>100% NYLON 6</b>
<b>Construction</b>	<b>HI- Low Loop</b>
<b>Pile Weight</b>	<b>730 gm/sqm</b>
<b>Backing</b>	<b>PVC + Fibre Glass</b>
<b>Size</b>	<b>50 cm X 50 cm</b>
<b>Quantity</b>	<b>5 sqm/Box</b>



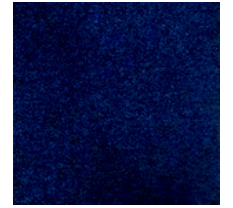
**BM 03**



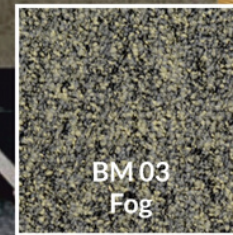
**BM 05**



**BM 07**



**BM 13**



---

" Excellence is to do a  
common thing in an  
uncommon way "